

## ProcessVue

We provide Alarm Management Software Systems

Abalto provide ProcessVue™ an alarm management system which combines over 20 years of experience of design and implementation of Alarm Management software using the latest communication, data logging and reporting technologies. It

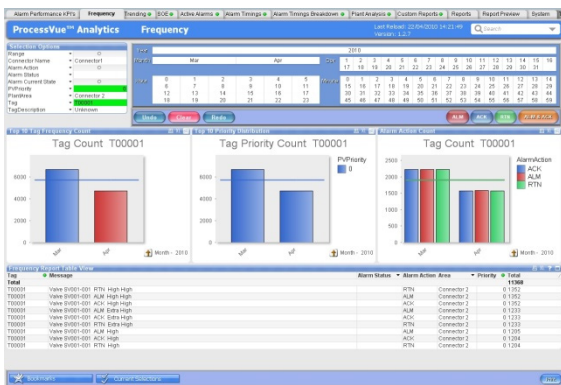
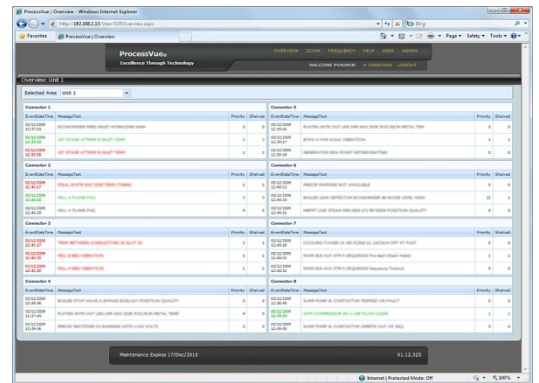
provides clear, relevant and prioritised information to Operators, Supervisors and Managers is critical to decision making whether in the control room or the board room.

### ProcessVue™ Features

- Advanced KPI Reporting Based on ISA 18.2 and EEMUA 191 Guidelines
- Alarm Rationalisation – Find the bad actors and nuisance alarms
- Sequence Of Event and Real Time Display in Internet Browser
- Alarm System Benchmarking
- Alarm and Event Analysis
- Alarm and Event Archiving

ProcessVue™ is scalable and can be used as a simple standalone package or bring together multiple disparate systems into one common platform. Advanced parsing rules allow even the most complex and variable data types to be formatted into single line meaningful alarms and event messages.

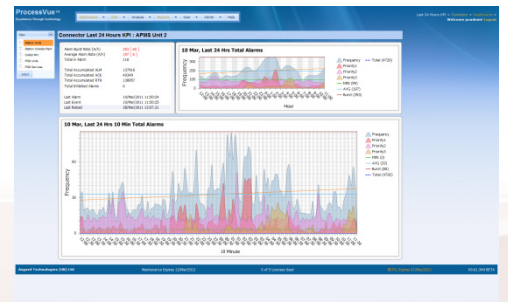
ProcessVue™ has Open Connectivity allowing data to be reconstructed and sent to third party applications as well as using standard SQL technology. ProcessVue™ uses the latest Ajax Zero footprint web client technology, allowing simple rollout, in even the most demanding IT environments.

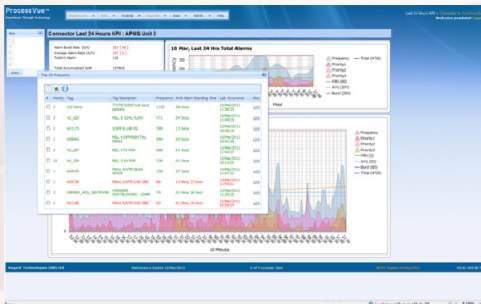


A properly managed alarm system has become an integral and critical part of any production and process facility. EEMUA 191 since it was first published in 1999 has become the de facto global standard to which industry looks for guidance and best practises for alarm management systems. To establish a system based on the ISA 18.2 or EEMUA 191 guidelines or merely ascertain if a current system is working effectively and within the guidelines alarm data must be continuously collected and analysed. With many disparate sources of alarm data from multiple control system vendors,

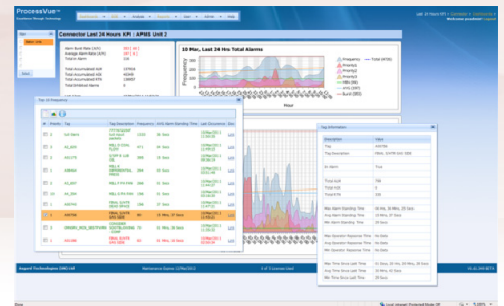
just collecting data can be a challenge in itself. Bringing this data into a usable form for the Control Room Operator and reporting for Managers are two distinct but equally important functions.

ProcessVue™ Analyser is a module updating in Real Time all Alarms Tags in 24 Hours and presents frequency of occurrence, averages and busts information including Best Practice KPIs.

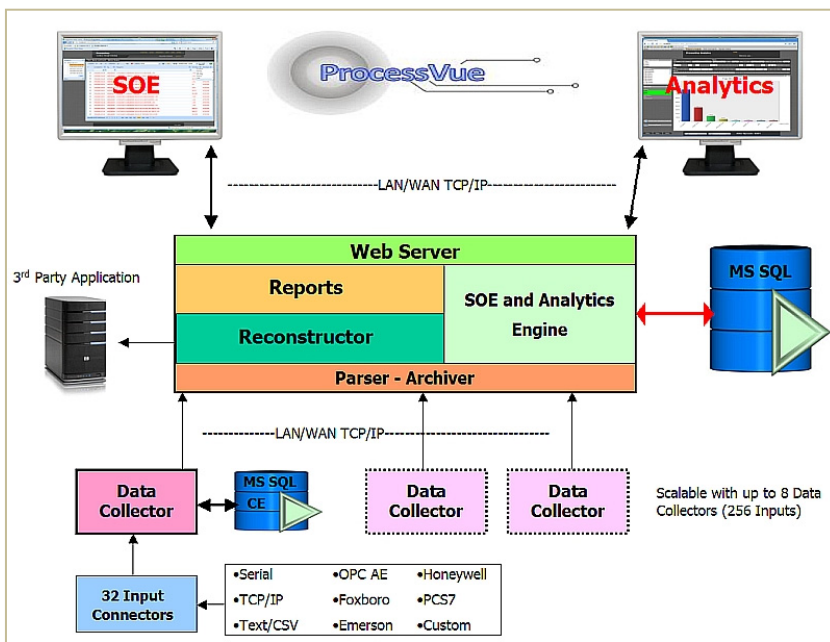




ProcessVue™ easily identifies the Top Ten Bad Actors for you to target and assess root cause. The analysis can be done by area, sub-system or plant units. Links are provided for you to detail the actions required by operators for each alarm. Bad Actors can be continuously identified and dealt with. Specific Alarms detailed information is available.



Bad Actors can be continuously identified and dealt with. Specific Alarms detailed information is available.



ProcessVue™ uses the latest .net technology from Microsoft, ensuring compatibility with both today's and future operating systems. Using the industry standard SQL database ensures reliable, secure and portable data storage.

ProcessVue™ can use the latest 64 bit operating systems to perform super-fast 'in memory analysis' on vast amounts of data. All active software components run as a Windows service, enabling Servers and Collector PCs to be logged out for secure operation.

**Sequence of Event (SOE)** – Real time display, search and find, highlight and export alarms.

**Analytics** – Analyse, bookmark and schedule KPI reporting benchmarked to EEMUA guidelines and ISA 18.2 standard.

**Archiver Parser** – The Archiver formats and parses the alarm string into separate fields in the MS SQL Database.

**Data Collector** – Local temporary storage of raw data from connectors.

**Input Connector** – Multiple data types from generic Serial, TCP/IP, Text/CSV file and OPC AE (Alarm and Event) to specific control systems vendor and custom protocols on request.

**Databases** – Using Windows Server 2008 and MS SQL to store and forward connectivity over TCP/IP throughout the system architecture ensures data integrity is maintained even when a LAN or WAN connection is unavailable.

**Web Clients** –The latest Ajax 'Zero Footprint' web clients have been used to give industry best performance whilst maintaining simple secure rollout over almost any IT infrastructure.

**3rd Party Connectivity** – Connectivity to 3rd party applications and systems is made simple using the very flexible Reconstructor Module. Honeywell, Invensys, Foxboro, Yokogawa and iMAC Legacy systems can benefit by having previously unusable alarm strings reconstructed to a simple format.

